

CATALOG 2023

PILPCZUK  
GALLERY

VESTERBROGADE 161  
1800 FREDERIKSBERG C /  
COPENHAGEN

CONTACT@PGALLERY.DK  
TEL +45 51 26 19 76

WWW.PGALLERY.DK

EWELINA SKOWRONSKA (PL/JPN)  
& LIA KIMURA (JPN/PL)

INTUITIVE REMINISCENCE – IN THE BEGINNING, WOMEN AS SUN

EWELINA SKOWRONSKA (PL/JPN)



Ewelina Skowronska,  
*Bolts of silk*,  
2022, unprimed  
cotton fabric, colour  
pencils, acrylic &  
screen print

81 cm x 113 cm

19.250 DKK



EWELINA SKOWRONSKA (PL/JPN)

PILPCZUK  
GALLERY



Ewelina Skowronska,  
*Mother*,  
2022, pastel, color  
pencil, acrylic &  
screen print on  
canvas

60 cm diameter

14.500 DKK

EWELINA SKOWRONSKA (PL/JPN)

PILPCZUK  
GALLERY



Ewelina Skowronska,  
*In Touch*,  
2022, pastel, color  
pencil, acrylic &  
screen print on  
canvas

60 cm diameter

14.500 DKK

EWELINA SKOWRONSKA (PL/JPN)

PILPCZUK  
GALLERY



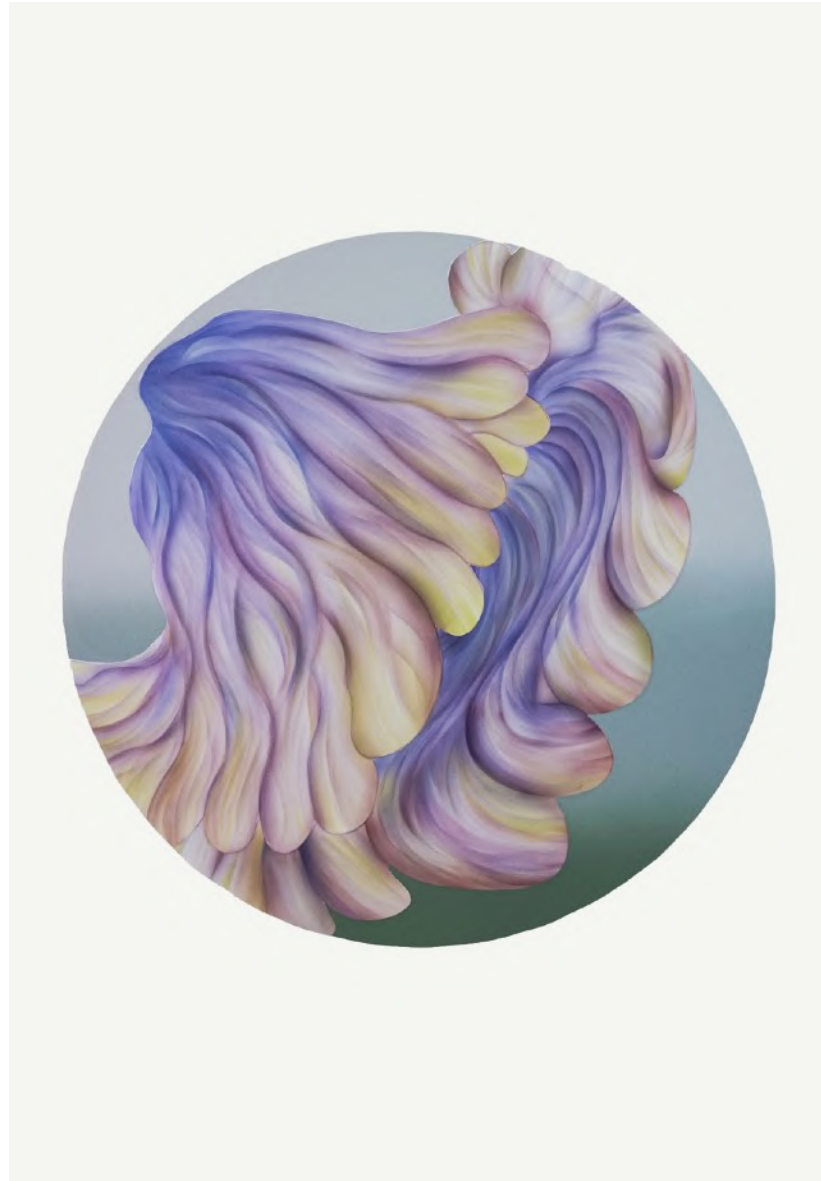
Ewelina Skowronska,  
*Becoming Body*,  
2022, pastel, color  
pencil, acrylic &  
screen print on  
canvas

60 cm diameter

14.500 DKK

EWELINA SKOWRONSKA (PL/JPN)

PILPCZUK  
GALLERY



Ewelina Skowronska,  
*Unseen Order of  
Things*,  
2022, pastel, color  
pencil, acrylic &  
screen print on  
Japanese IZUMI  
paper

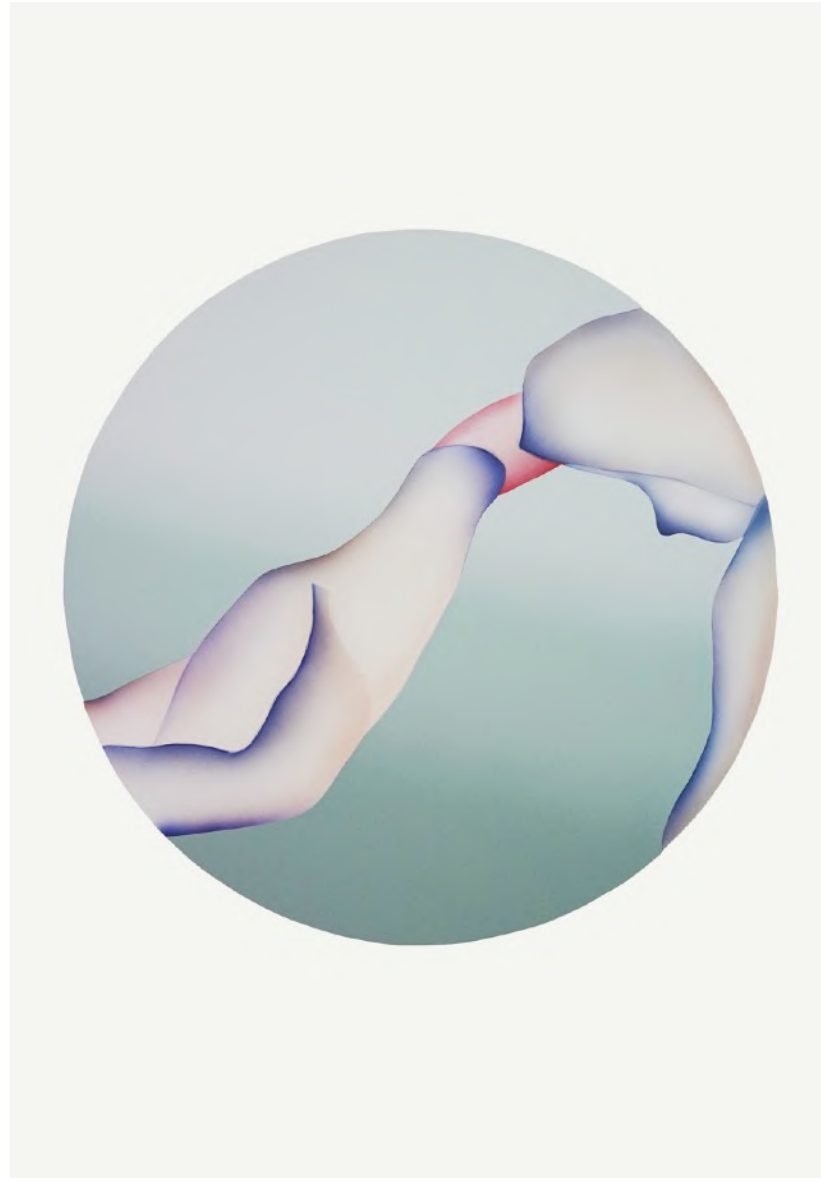
104 x 77 cm / framed

Sold



EWELINA SKOWRONSKA (PL/JPN)

PILPCZUK  
GALLERY

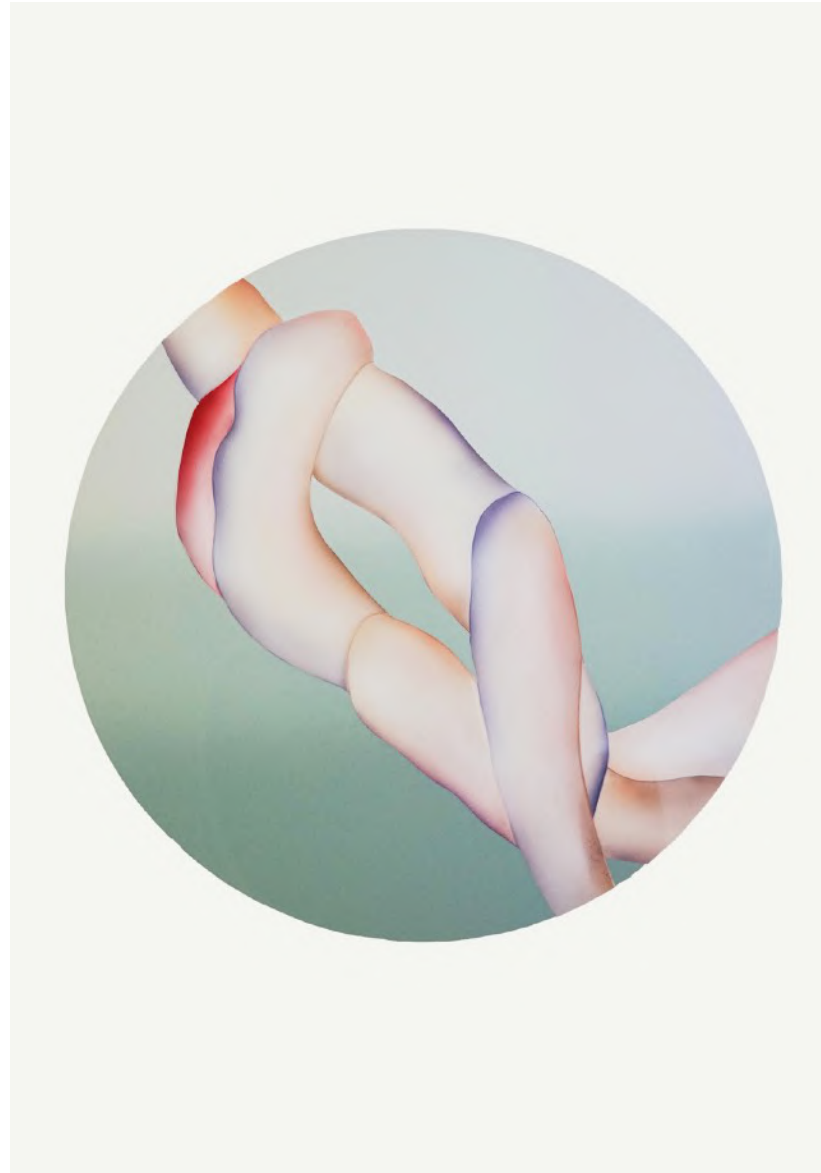


Ewelina Skowronska,  
*Night Spirits*,  
2022, pastel, color  
pencil, acrylic &  
screen print on  
Japanese IZUMI  
paper

104 x 77 cm / framed

10.750 DKK

EWELINA SKOWRONSKA (PL/JPN)



Ewelina Skowronska,  
*Night Spirits II*,  
2022, pastel, color  
pencil, acrylic &  
screen print on  
Japanese IZUMI  
paper

104 x 77 cm / framed

10.750 DKK



EWELINA SKOWRONSKA (PL/JPN)

PILPCZUK  
GALLERY

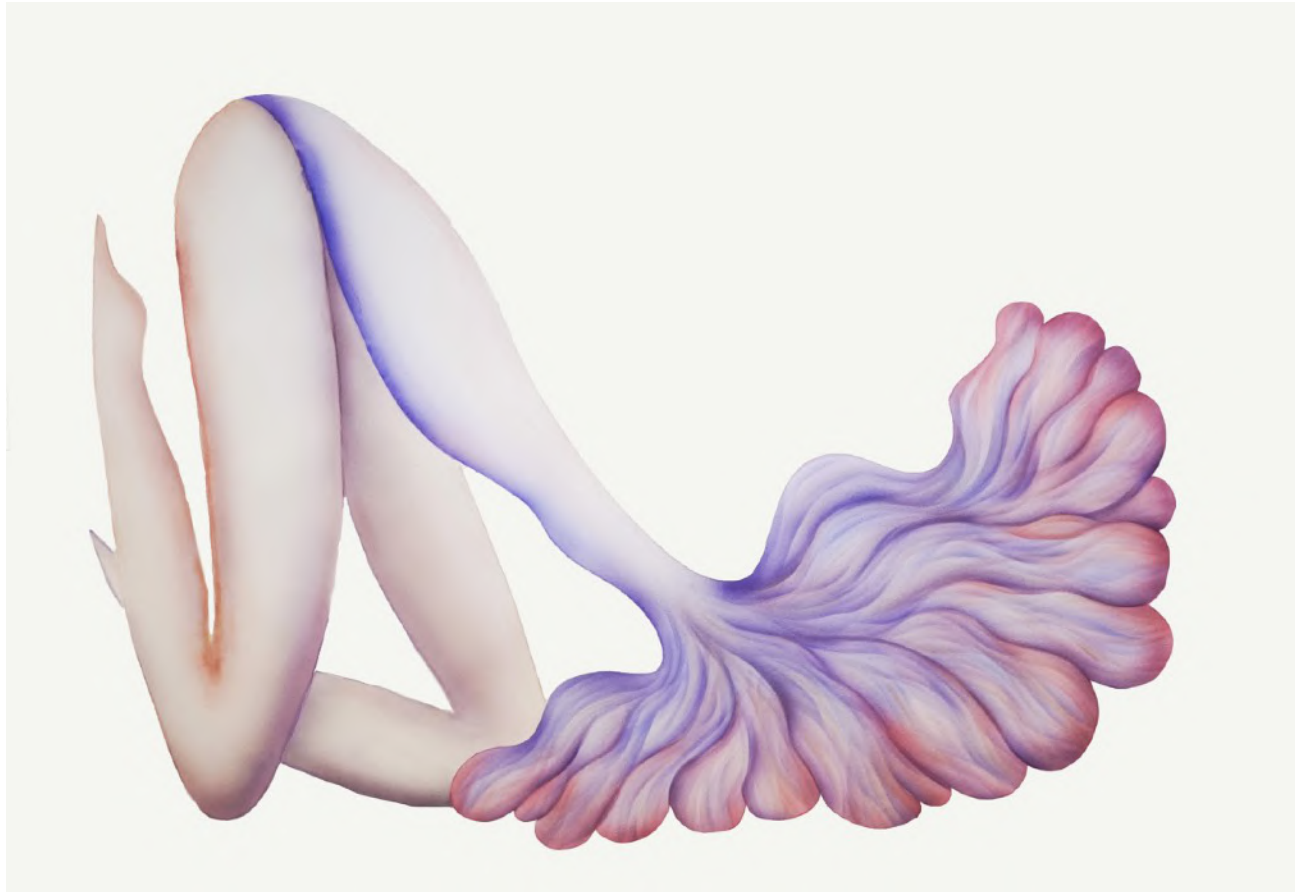


Ewelina Skowronska,  
*The Mother of  
Dreams*,  
2022, pastel, color  
pencil, acrylic &  
screen print on  
Japanese IZUMI  
paper

104 x 77 cm / framed

10.750 DKK

EWELINA SKOWRONSKA (PL/JPN)

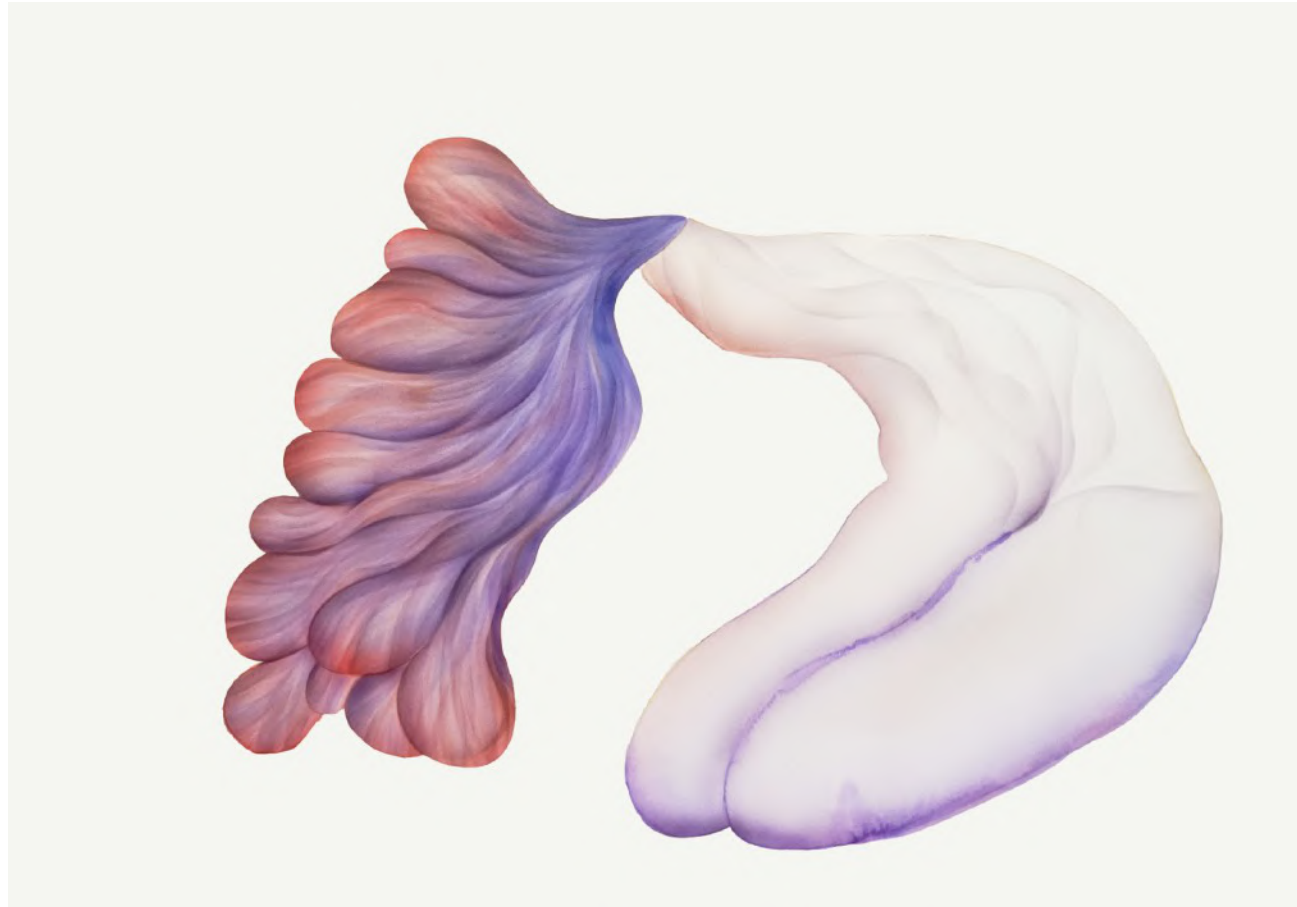


Ewelina Skowronska,  
*Ryo no onna*, 2022,  
watercolors, pastels,  
color pencil, acrylic  
on Japanese IZUMI  
paper

77 x 104 cm / framed

10.750 DKK

EWELINA SKOWRONSKA (PL/JPN)



Ewelina Skowronska,  
*Hana no fukai*, 2022,  
watercolors, pastels,  
color pencil, acrylic  
on Japanese IZUMI  
paper

77 x 104 cm / framed

10.750 DKK



EWELINA SKOWRONSKA (PL/JPN)



Ewelina Skowronska,  
*Nesting I*,  
2022, glazed half  
porcelain

15 cm diameter

2.600 DKK

EWELINA SKOWRONSKA (PL/JPN)

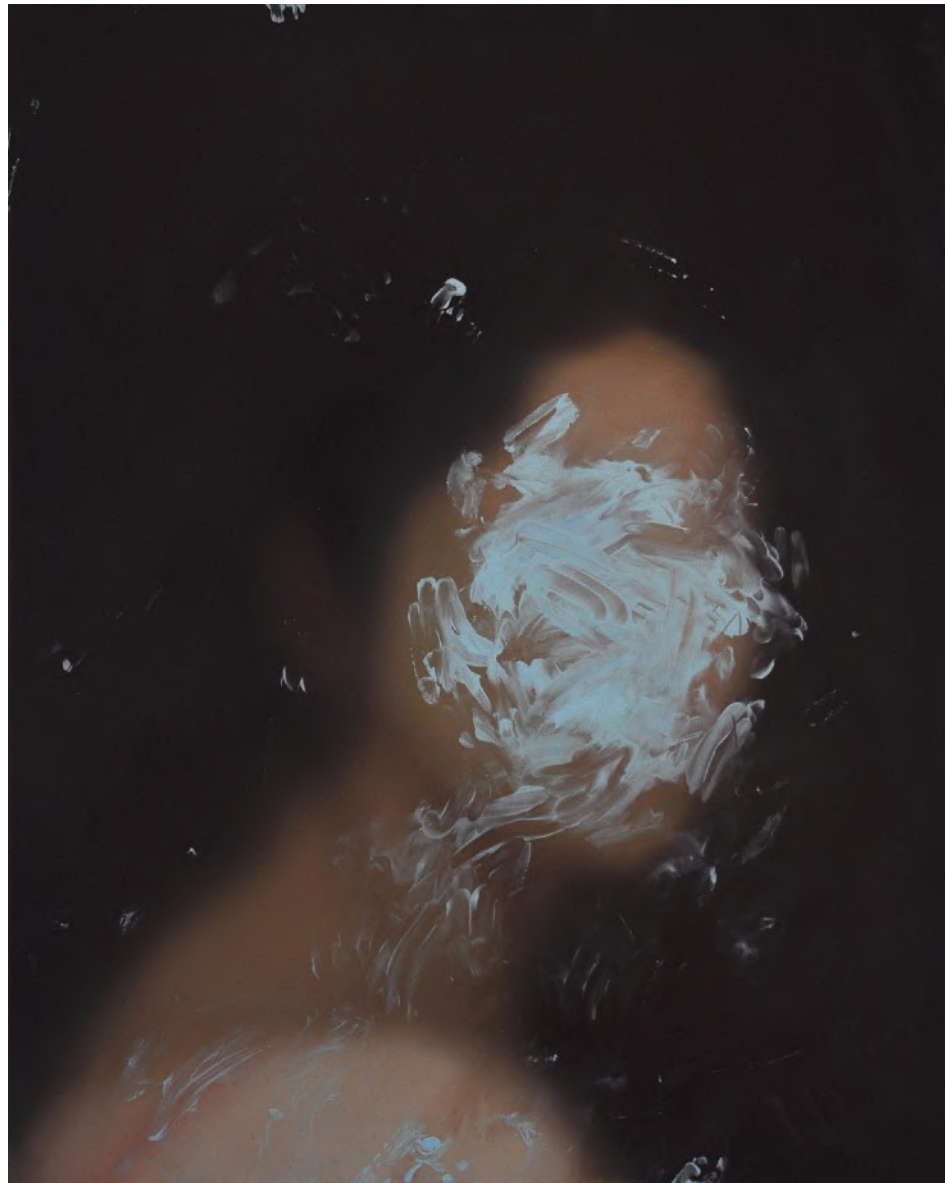


Ewelina Skowronska,  
*Nesting II*,  
2022, glazed half  
porcelain

15 cm diameter

2.600 DKK

LIA KIMURA (JPN/PL)



Lia Kimura,  
*Brightness*,  
2023, Oil on canvas,  
100 cm x 80 cm

56.000 DKK



LIA KIMURA (JPN/PL)



Lia Kimura, *Caring*,  
2023, Oil on canvas,  
100 cm x 80 cm

56.000 DKK

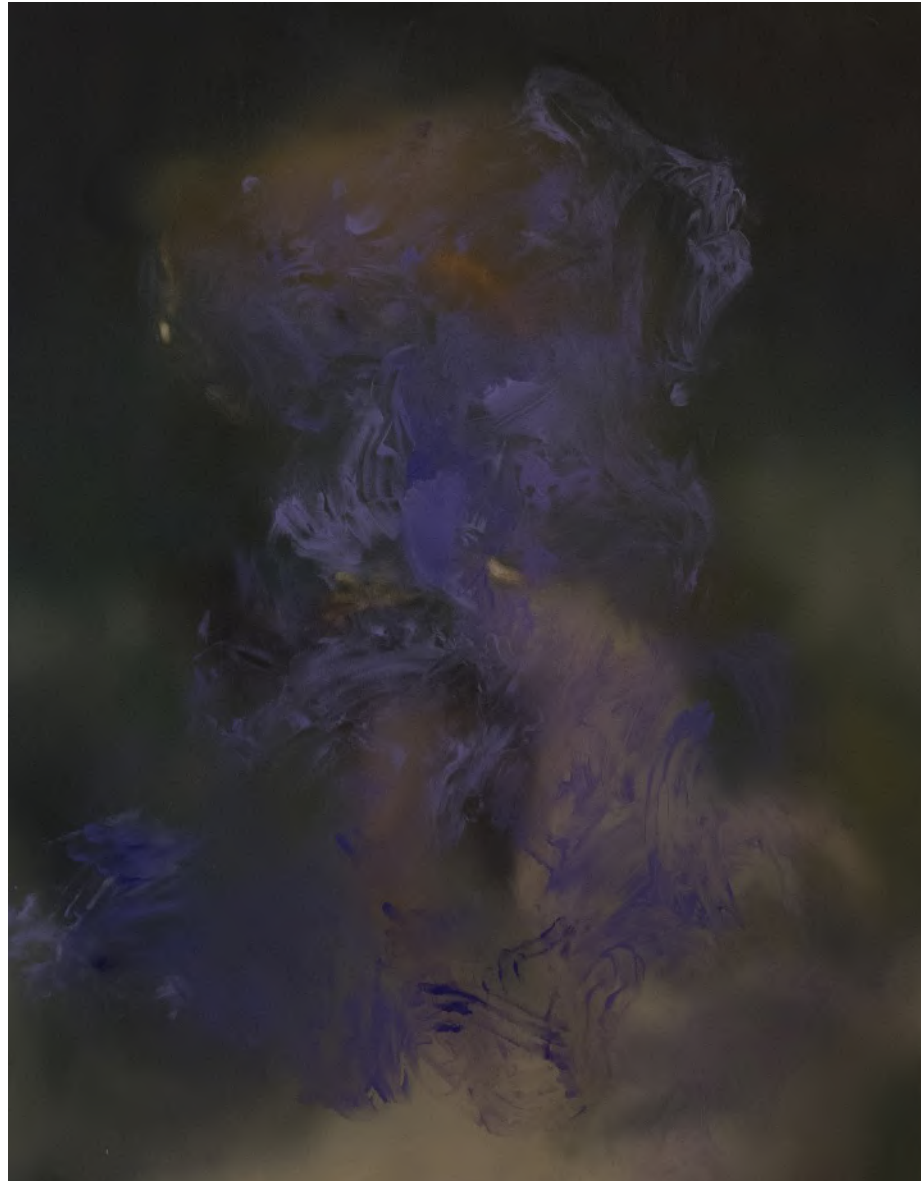
LIA KIMURA (JPN/PL)



Lia Kimura, *Soul*,  
2021, Oil on canvas,  
100 cm x 80 cm

50.250 DKK

LIA KIMURA (JPN/PL)



Lia Kimura, *Delusion*,  
2021, Oil on canvas,  
120 cm x 100 cm

63.500 DKK



LIA KIMURA (JPN/PL)



Lia Kimura,  
*Disintegration*,  
2021, Oil on canvas,  
120 cm x 100 cm

63.500 DKK

The duo exhibition *'Intuitive Reminiscence - in the beginning, women as sun'* created by Lia Kimura from Japan, living in Poland and Ewelina Skowrońska from Poland, living in Japan, shows the artist's preoccupation with distant memories, manifested through the recollection of the body and the sensual consciousness.

"Human body – the most popular motif in fine arts – has been for centuries accompanied by numerous reflections on the physical and mental spheres, identity and otherness, as well as participation and separateness. An extremely important issue for a creative individual is the ability to define one's identity – own body, a strong "I" voice, which allows to identify with certain groups and stand up to contradictory ideas. The female body, for obvious reasons, most often becomes entangled in social and political contexts. Therefore, there is no better tool for expressing the strong voice of female artists than their own bodies perceived on the one hand as something individual, on the other hand as a general artistic form to which various fields of art (not necessarily practiced by women) have claimed rights over the centuries. Using the body as an artistic tool, artists show that femininity can be expressed in multiple forms and go beyond the usual patterns.

Ewelina Skowronska's painting is art that undoubtedly derives from the experience of one's own gender. It is a skillfully conducted, mature artistic statement that does not lose the essential element of femininity. The latest series presented at the exhibition is strongly related to the concept of organic abstraction, which stems from earlier theoretical assumptions focused on the corporeality. The artist reaches for the language of abstraction, using the aesthetics of a body fragment subjected to a strong synthesis. Nature, which is definitely an inspiration for this series, is used as template for shapes. Same as the female body, it becomes a source for synthetic forms. Multiplied fragments are reproduced not only within a specific work, but also within the entire series, creating a coherent, sensual and ephemeral painterly reflection, already initiated in earlier realizations. The form itself is extremely important here. The evolution of created shapes is directly related to the subject of corporeality, its place and the role it plays in everyday life.

Lia Kimura reaches for fragments of more or less literal images in her paintings. The main focus of her art is on the inner layer. Her characteristic painting style is rapidly moving away from figurative art towards abstract formal assumptions. Legible, precisely rendered details of the human body are deformed to such an extent that individual elements cannot be properly identified. The consolidation of the body and the background means that the viewer is only able to define the outline of a female figure emerging from the darkness, stripped of apparent beauty. The background, which is also a flat patch, becomes an open and mysterious space. There are no signs of presence at a specific time and place. The foreground becomes equally important, giving the impression of a filter, a blurred window through which the viewer observes the image. The figure is somehow suspended in space, which becomes its integral part. The artist, based very strongly on her personal experiences, refers to a general reflection centered around feelings and emotions." - Paulina Swierczynska-Brzezynska



## Bio

Lia Kimura is a Japan-born Polish artist. Kimura's work is mostly connected with her place of birth, search for identity and intensive feelings: the experience of death, alienation, and hope. Her paintings represent both the traditional form of expression and the experimental approach, in which the figurative body together with the abstract matter become the key themes of creative considerations. The artist currently lives and works in Warsaw. Her paintings belong to private collections and appear regularly at the auctions in Polish auction houses.

## Artist statement

"I'm a very sensitive and attentive observer of everyday reality. I transfer my observations into the canvas and treat each of them as a thread of stories about man, extreme feelings and passing away. I paint complicated emotions, everyday worries, internal fears, and hidden desires.

I care about showing the ephemeral moments in life in a non-literal way. I do not present real people or situations. I create anonymous faces and do not identify them with real people. A common motif that appears on my canvases is the human body. I usually combine them with dark background matter.

I am constantly looking for an intermediate state between figurative art and abstraction. I experiment with color and texture as well as images of mysterious figures. As a reflective person with melancholic nature, I often reflect on philosophical issues such as the nature of man and the world and the basis of one's existence." - Lia Kimura





## Bio

Ewelina Skowrońska is a Polish visual artist developing her practice in the fields of images and objects through the use of printmaking, drawings, and ceramic. Her interests include concepts of body, nature, spirituality and psychology of human relations. She seeks inspiration for her artistic practice in everyday experiences, mythology, poetry, speculative narratives and intangible connections of the world.

Skowrońska holds an MFA in Political Science. In 2015 she retrained and specialized in visual arts at the University of The Arts London where she graduated with distinction.

Skowrońska's work has been exhibited in London, Ireland, USA, Canada, Poland, and Japan. In 2017, she was awarded the Print Prize by ST Bridge Foundation, and in 2018 she was shortlisted for Ashurst Emerging Artist Prize 2018. Her prints are in the collection of VA Museum London; Spiral Wacoal Art Foundation, Tokyo, Japan; Guanlan Printmaking Museum, China.

Skowrońska is currently based in Japan, where she is an active participant of the Tokyo art scene.